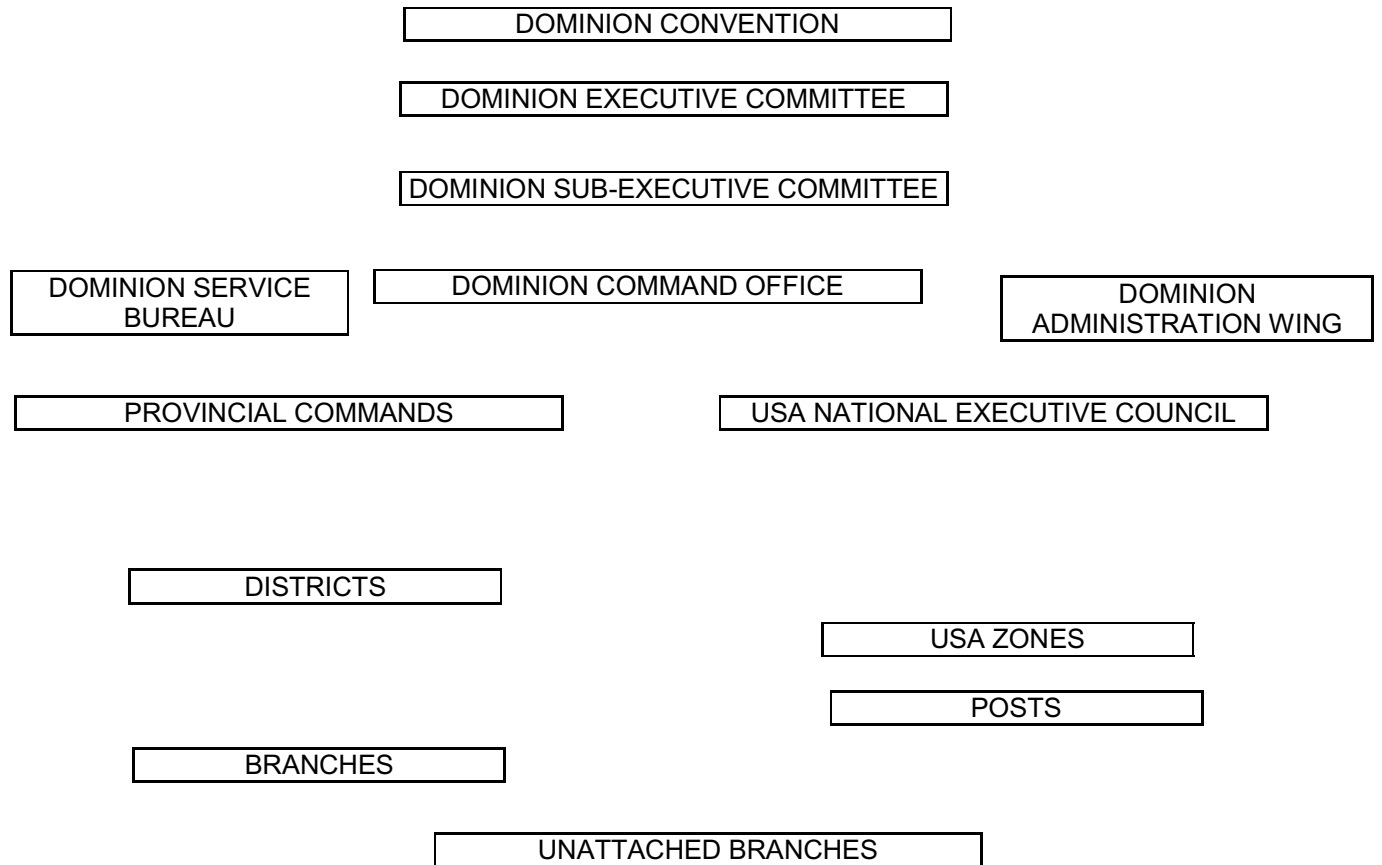


## ORGANIZATIONAL CHART OF THE ROYAL CANADIAN LEGION



The Dominion Convention is the Supreme authority of the Legion.

The Convention may issue directives to the Dominion Executive Council and/or the Sub-Executive Committee of the Council may issue directives to the Dominion Command Office.

The Dominion Command Office consists of an Administrative Wing and a Service Bureau.

Communications may be directed from the Dominion Command Office to the Provincial and State Command Offices and in some cases direct to the Branches.

The Dominion Executive Council may pass By-Laws which may be confirmed by the next Dominion Convention. If not confirmed by the next convention, the By-Law lapses. The composition of the Dominion Executive Council and the Sub-Executive Committee of the Council is given in the Dominion Command General By-Laws of the Royal Canadian Legion.